

Find us on



MAGNUS

**Stereo
Microscope**

MS13 / MS24

Key Features

- ➔ Parfocal optics
- ➔ 6V/10W halogen / LED top lamp
- ➔ Long working distance of 105mm
- ➔ 5W fluorescent / LED bottom lamp
- ➔ Ergonomic design for ease of operation
- ➔ Options for reflected and transmitted light
- ➔ Smooth objective changeover from 10x~30x or 20x~40x

Optional Accessories



Gems - Inspection
Accessories

MS13/MS24 LED Version



MS13/MS24 HALOGEN Version

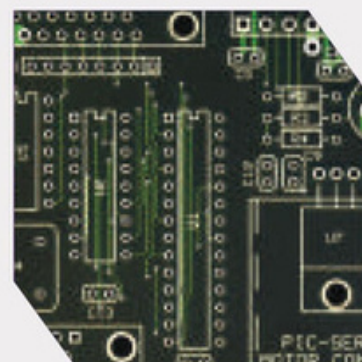
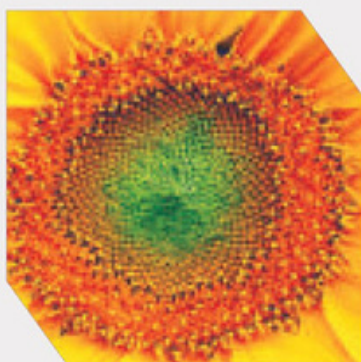


www.magnusopto.com

SPECIFICATIONS

Stereo Microscopes for **Biological & Industrial Use**

		Model MS 13		Model MS 24	
Microscope Body	Objective	1x / 3x		2x / 4x	
	Working Distance	105mm			
	Diopter Adjustment	+/- 5 (left side)			
Eyepiece	High eyepoint super widefield eyepiece SWH 10x with field number 23				
Field Of View	Objective	1x	3x	2x	4x
	Visual Field (mm)	23	7.7	11.5	5.7
Light Source	Reflected	6V 10W lamp with adjustable brightness or LED illumination			
	Transmitted	5W fluorescent lamp or LED illumination			
Optional Accessories	Auxiliary Objectives of 0.5x 1.5x & 2x	Fluorescent ring light			
		Eyepiece 15x and 20x			



MAGNUS OPTO SYSTEMS INDIA PVT. LTD.

Works : A-3, Sec-81, Phase-II, Noida - 201305, Uttar Pradesh, India
 Corporate Office : A-5, Mohan Co-operative Industrial Estate. (Opp. Sarita Vihar), Mathura Road,
 New Delhi 110044, India, Phone: +919717710061

Email : info@magnusopto.com, Website : www.magnusopto.com



All standard sets are supplied as per specifications which are subject to change without any obligation on the part of the manufacturer.
 Optics are anti-fungus treated & with multi-layer coatings. Accessories shown may not be part of standard equipment.